

# SCO O-Ring Face Seal Fittings

---

The best partner for value creation  
We support the innovations of customer



# 05



Catalogue No. S-LOK Mar.2024

**Union Gland**



186

**S-LOK Tube Connector Gland**



186

**Tube Adapter Gland**



187

**Tube Socket Weld Gland**



187

**Tube Socket Weld Reducing Gland**



187

**Male Tube Weld Gland**



188

**Automatic Tube Weld Gland**



188

**Male Connector Gland**



188

**Female Connector Gland**



189

**Male SAE/MS Connector Gland**



189

**Union Body**



190

**Reducing Union Body**



190

**S-LOK Tube Fitting Connector Body**



190

**Elbow Body**



191

**Tee Body**



191

**Bulkhead Union Body**



191

**S-LOK Tube Fitting Bulkhead Connector Body**



192

**S-LOK Tube Fitting Elbow Body**



192

**Tube Socket Weld Body**



193

**Automatic Tube Weld Body**



193

**Male Connector Body**



193

**Female Connector Body**



194

**Male SAE/MS Connector Body**



194

**Male Elbow Body**



195

**Male SAE/MS Positionable Elbow Body**



195

**Blind**



195

**Female Nut**



196

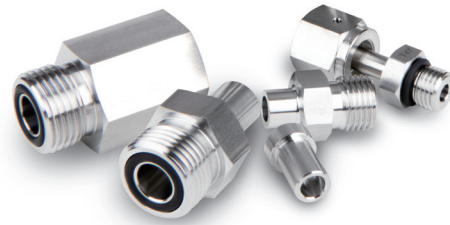
**Blind Nut**



196

## Features

- Designed for quick assembly in pipe, tube and welded systems.
- Easy installation and disassembly
- Leak-tight from vacuum to positive pressure
- Wide range of temperature up to 550°F
- Smooth finish on gland face
- Nuts with two test ports
- Silver plated nut thread



## Technical Data

### Pressure Ratings

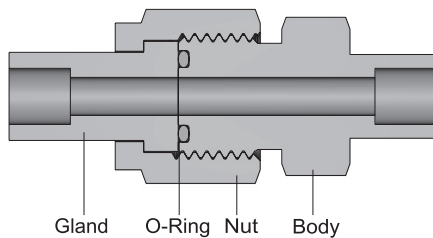
- Pressure ratings comply with calculations in accordance with ASME B31.3 and ASME B31.1.

### Temperature Ratings

- Temperature ratings are determined by the O-ring materials.
- Fluorocarbon FKM O-ring is standard.
- Other o-ring materials are available upon request.
- Refer to the table below for the temperature range for o-ring materials.

O-Ring Material	Temperature Rating °F (°C)
Fluorocarbon FKM	400 (204)
Buna N	250 (121)
Perfluoroelastomer	550 (287)
Ethylene propylene	300 (148)
PTFE	450 (232)

### Typical Assembly



### Standard Materials of Construction

Component	Material
Bodies	316 Stainless Steel
Glands	316 Stainless Steel
Nuts	316 Stainless Steel
Automatic tube weld fittings	316L Stainless Steel
O-ring for SCO bodies	Fluorocarbon FKM (75 durometer)
O-ring for SAE/MS threads	Fluorocarbon FKM (90 durometer)

### O-Ring Uniform Size Number

Fluorocarbon FKM O-ring (Hardness Shore A 75) is standard on SCO bodies.

SCO Size inch	O-Ring Uniform Size Number
1/4 (& 1/8)	010
1/2 (& 3/8)	111
3/4	116
1	215

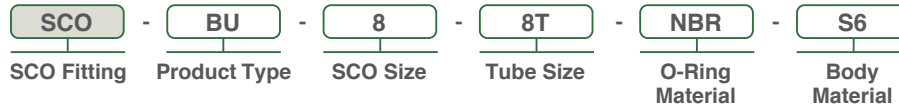
Fluorocarbon FKM O-ring (Hardness Shore A 90) is standard on SAE/MS threads.

SAE/MS Thread Size	O-Ring Uniform Size Number
7/16 – 20	904
9/16 – 18	906
3/4 – 16	908
1-1/16 – 12	912
1-5/16 – 12	916

### Helium Leak Testing

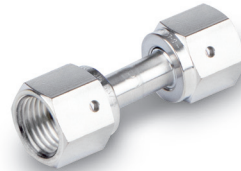
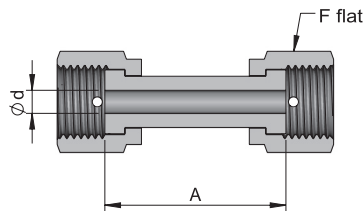
- Maximum leak rate :  $4 \times 10^{-9}$  std cm<sup>3</sup>/s

## Ordering Information and Dimension



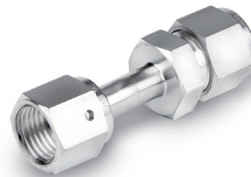
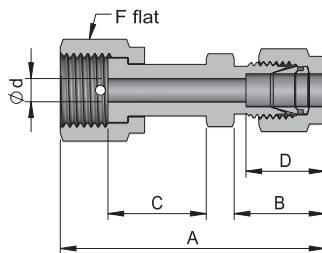
- **O-Ring Material**
  - Nil : Fluorocarbon FKM
  - **NBR** : Buna N
  - **KA** : Perfluoroelastomer
  - **EP** : Ethylene propylene
  - **TE** : PTFE
- **Body Material**
  - **S6** : SS316
  - **S6L** : SS316L

## Union Gland



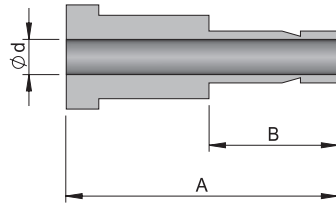
Part Number	SCO Size	Dimensions, inch (mm)			Pressure Rating psig (bar)
		d	A	F	
SCO-GU-4	1/4"	0.18(4.6)	1.42(36.1)	11/16(17.46)	10200(702)
SCO-GU-8	1/2"	0.40(10.2)	1.61(40.9)	1(25.4)	5800(399)

## S-LOK Tube Connector Gland



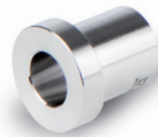
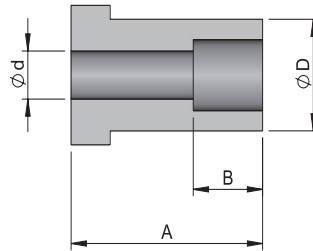
Part Number	SCO Size	Tube O.D.	Dimensions, inch (mm)						Pressure Rating psig (bar)
			d	A	B	C	D	F	
SCO-GSC-4-4T	1/4"	1/4"	0.18(4.6)	1.74(44.2)	0.70(17.8)	0.77(19.6)	0.60(15.2)	11/16(17.46)	10200(702)
SCO-GSC-8-6T	1/2"	3/8"	0.28(7.1)	1.87(47.5)	0.76(19.3)	0.81(20.6)	0.66(16.8)	1(25.40)	5800(399)
SCO-GSC-8-8T	1/2"	1/2"	0.40(10.2)	2.01(51.1)	0.87(22.1)	0.81(20.6)	0.90(22.9)	1(25.40)	5800(399)
SCO-GSC-12-12T	3/4"	3/4"	0.62(15.7)	2.14(54.4)	0.87(22.1)	0.94(23.9)	0.96(24.4)	1-1/2(38.10)	4000(275)
SCO-GSC-16-16T	1"	1"	0.87(22.1)	2.45(62.2)	1.04(26.4)	0.98(24.9)	1.23(31.2)	1-3/4(44.45)	3000(206)

### Tube Adapter Gland



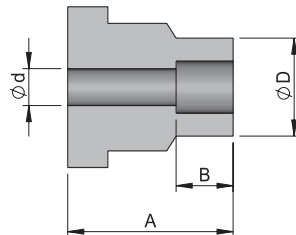
Part Number	SCO Size	Tube O.D	Dimensions, inch (mm)			Pressure Rating psig (bar)
			d	A	B	
SCO-GA-4-4T	1/4"	1/4"	0.18(4.6)	1.31(33.3)	0.64(16.3)	10200(702)
SCO-GA-8-6T	1/2"	3/8"	0.27(6.8)	1.38(35.1)	0.70(17.8)	6500(447)
SCO-GA-8-8T	1/2"	1/2"	0.37(9.3)	1.62(41.1)	0.96(24.4)	6700(461)
SCO-GA-12-12T	3/4"	3/4"	0.58(14.7)	1.80(45.7)	1.02(25.9)	5800(399)
SCO-GA-16-16T	1"	1"	0.80(20.3)	2.05(52.1)	1.30(33.0)	4700(323)

### Tube Socket Weld Gland



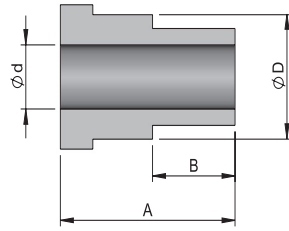
Part Number	SCO Size	Tube O.D	Dimensions, inch (mm)				Pressure Rating psig (bar)
			d	A	B	D	
SCO-GSWC-4-2T	1/4"	1/8"	0.09(2.3)	0.77(19.6)	0.10(2.5)	0.38(9.7)	15400(1061)
SCO-GSWC-4-4T	1/4"	1/4"	0.18(4.6)	0.77(19.6)	0.28(7.1)	0.38(9.7)	6800(468)
SCO-GSWC-8-6T	1/2"	3/8"	0.28(7.1)	0.81(20.6)	0.31(7.9)	0.60(15.2)	8100(558)
SCO-GSWC-8-8T	1/2"	1/2"	0.40(10.2)	0.81(20.6)	0.38(9.7)	0.73(18.5)	3000(206)
SCO-GSWC-12-12T	3/4"	3/4"	0.62(15.7)	0.94(23.9)	0.44(11.2)	0.92(23.4)	3700(255)
SCO-GSWC-16-16T	1"	1"	0.87(22.1)	0.98(24.9)	0.62(15.7)	1.19(30.2)	3000(206)

### Tube Socket Weld Reducing Gland



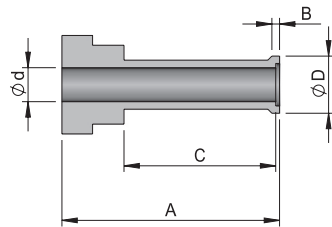
Part Number	SCO Size	Tube O.D	Dimensions, inch (mm)				Pressure Rating psig (bar)
			d	A	B	D	
SCO-GSWR-4-2T	1/4"	1/8"	0.09(2.3)	0.77(19.6)	0.10(2.5)	0.29(7.4)	12600(868)
SCO-GSWR-8-4T	1/2"	1/4"	0.18(4.6)	0.81(20.6)	0.28(7.1)	0.48(12.2)	10700(737)

## Male Tube Weld Gland



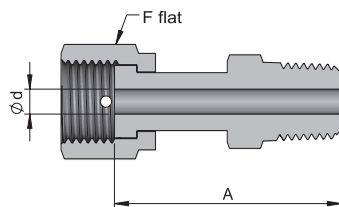
Part Number	SCO Size	Tube O.D	Dimensions, inch (mm)				Pressure Rating psig (bar)
			d	A	B	D	
SCO-GWC-4-2T	1/4"	1/8"	0.06(1.5)	0.77(19.6)	0.28(7.1)	0.38(9.7)	11200(771)
SCO-GWC-4-4T	1/4"	1/4"	0.12(3.0)	1.12(28.4)	0.41(10.4)	0.38(9.7)	11200(771)
SCO-GWC-8-4T	1/2"	1/4"	0.12(3.0)	0.91(23.1)	0.41(10.4)	0.60(15.2)	11200(771)
SCO-GWC-8-6T	1/2"	3/8"	0.23(5.8)	0.84(21.3)	0.41(10.4)	0.60(15.2)	8200(564)
SCO-GWC-8-8T	1/2"	1/2"	0.33(8.4)	1.06(26.9)	0.50(12.7)	0.60(15.2)	7500(516)

## Automatic Tube Weld Gland



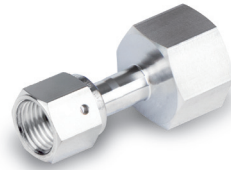
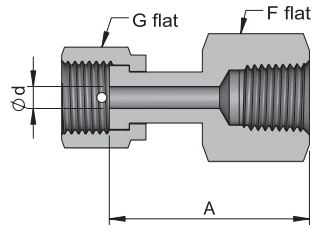
Part Number	SCO Size	Tube O.D	Dimensions, inch (mm)					Pressure Rating psig (bar)
			d	A	B	C	D	
SCO-GWAC-4-4T	1/4"	1/4"	0.18(4.6)	1.12(28.4)	0.02(0.51)	0.78(19.8)	0.29(7.4)	5100(351)
SCO-GWAC-8-6T	1/2"	3/8"	0.31(7.9)	1.13(28.7)	0.03(0.76)	0.79(20.0)	0.41(10.4)	3300(227)
SCO-GWAC-8-8T	1/2"	1/2"	0.40(10.2)	1.14(29.0)	0.04(1.0)	0.80(20.3)	0.55(14.0)	3500(241)
SCO-GWAC-12-12T	3/4"	3/4"	0.65(16.5)	1.20(30.5)	0.04(1.0)	0.80(20.3)	0.80(20.3)	2200(151)
SCO-GWAC-16-16T	1"	1"	0.87(22.1)	1.41(35.8)	0.04(1.0)	1.00(25.4)	1.06(26.9)	2200(151)

## Male Connector Gland



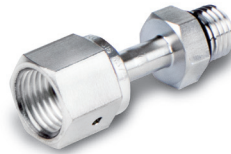
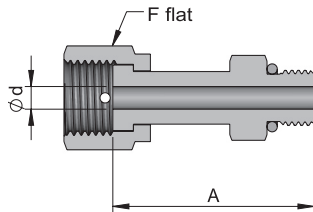
Part Number	SCO Size	NPT Size	Dimensions, inch (mm)			Pressure Rating psig (bar)
			d	A	F	
SCO-GMC-4-4N	1/4"	1/4"	0.18(4.6)	1.59(40.4)	11/16(17.46)	9800(675)
SCO-GMC-8-6N	1/2"	3/8"	0.40(10.2)	1.67(42.4)	1(25.4)	5600(385)
SCO-GMC-8-8N	1/2"	1/2"	0.40(10.2)	1.87(47.5)	1(25.4)	5600(385)
SCO-GMC-12-12N	3/4"	3/4"	0.62(15.7)	2.03(51.6)	1-1/2(38.10)	3900(268)
SCO-GMC-16-16N	1"	1"	0.87(22.1)	2.36(59.9)	1-3/4(44.45)	2900(199)

## Female Connector Gland



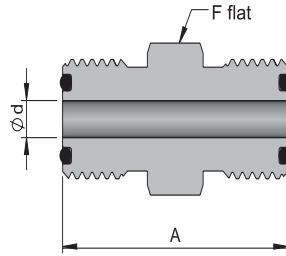
Part Number	SCO Size	NPT Size	Dimensions, inch (mm)				Pressure Rating psig (bar)
			d	A	F	G	
SCO-GFC-4-4N	1/4"	1/4"	0.18(4.6)	1.57(39.9)	3/4(19.05)	11/16(17.46)	6600(454)
SCO-GFC-8-6N	1/2"	3/8"	0.40(10.2)	1.73(43.9)	7/8(22.22)	1(25.4)	5300(365)
SCO-GFC-8-8N	1/2"	1/2"	0.40(10.2)	1.96(49.8)	1-1/16(26.98)	1(25.4)	4900(337)
SCO-GFC-12-12N	3/4"	3/4"	0.62(15.7)	2.12(53.8)	1-5/16(33.33)	1-1/2(38.10)	4000(275)
SCO-GFC-16-16N	1"	1"	0.87(22.1)	2.29(58.2)	1-5/8(41.27)	1-3/4(44.45)	3000(206)

## Male SAE/MS Connector Gland



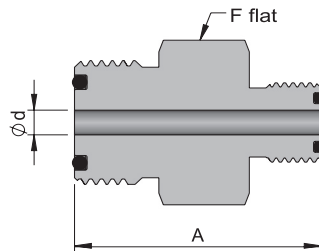
Part Number	SCO Size	Straight Thread Size	Dimensions, inch (mm)			Pressure Rating psig (bar)
			d	A	F	
SCO-GUS-4-4U	1/4"	7/16 – 20	0.18(4.6)	1.54(39.1)	11/16(17.46)	4500(310)
SCO-GUS-8-6U	1/2"	9/16 – 18	0.40(10.2)	1.64(41.7)	1(25.4)	4500(310)
SCO-GUS-8-8U	1/2"	3/4 – 16	0.40(10.2)	1.71(43.4)	1(25.4)	4500(310)
SCO-GUS-12-12U	3/4"	1-1/16 – 12	0.62(15.7)	2.07(52.6)	1-1/2(38.10)	3600(248)
SCO-GUS-16-16U	1"	1-5/16 – 12	0.87(22.1)	2.17(55.1)	1-3/4(44.45)	2900(199)

### Union Body



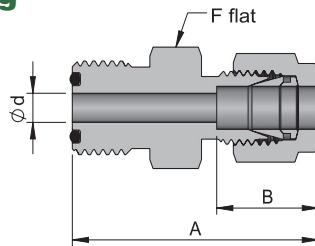
Part Number	SCO Size	Dimensions, inch (mm)			Pressure Rating psig (bar)
		d	A	F	
SCO-BU-4	1/4"	0.18(4.6)	1.25(31.8)	5/8(15.87)	14300(985)
SCO-BU-8	1/2"	0.40(10.2)	1.50(38.1)	15/16(23.81)	11100(764)

### Reducing Union Body



Part Number	SCO Size 1	SCO Size 2	Dimensions, inch (mm)			Pressure Rating psig (bar)
			d	A	F	
SCO-BUR-8-4	1/2"	1/4"	0.18(4.6)	1.43(36.3)	15/16(23.81)	11100(764)

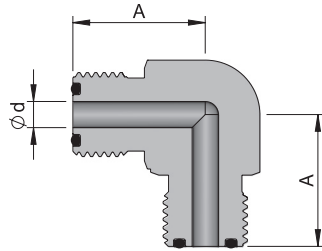
### S-LOK Tube Fitting Connector Body



Part Number	SCO Size	Tube O.D	Dimensions, inch (mm)				Pressure Rating psig (bar)
			d	A	B	F	
SCO-BSC-4-2T	1/4"	1/8"	0.09(2.3)	1.38(35.1)	0.51(13.0)	5/8(15.87)	10900(751)
SCO-BSC-4-4T	1/4"	1/4"	0.18(4.6)	1.47(37.3)	0.60(15.2)	5/8(15.87)	10200(702)
SCO-BSC-8-6T	1/2"	3/8"	0.28(7.1)	1.65(41.9)	0.66(16.8)	15/16(23.81)	6500(447)
SCO-BSC-8-8T	1/2"	1/2"	0.40(10.2)	1.78(45.2)	0.90(22.9)	15/16(23.81)	6700(461)
SCO-BSC-12-12T	3/4"	3/4"	0.62(15.7)	1.86(47.2)	0.96(24.4)	1-5/16(33.33)	5800(399)
SCO-BSC-16-16T	1"	1"	0.87(22.1)	2.06(52.3)	1.23(31.2)	1-5/8(41.27)	4700(323)

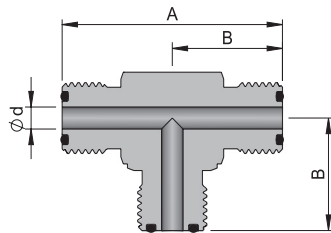


### Elbow Body



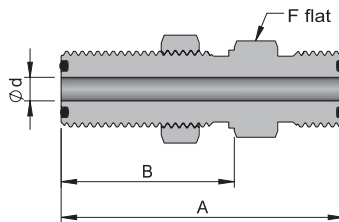
Part Number	SCO Size	Dimensions, inch (mm)		Pressure Rating psig (bar)
		d	A	
SCO-BL-4	1/4"	0.18(4.6)	0.96(24.4)	14300(985)
SCO-BL-8	1/2"	0.40(10.2)	1.26(32.0)	11100(764)
SCO-BL-12	3/4"	0.62(15.7)	1.48(37.6)	10900(751)
SCO-BL-16	1"	0.87(22.1)	1.56(39.6)	8800(606)

### Tee Body



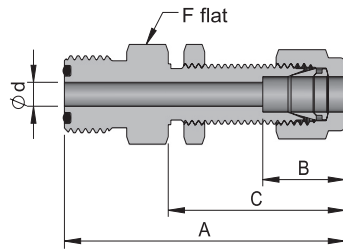
Part Number	SCO Size	Dimensions, inch (mm)			Pressure Rating psig (bar)
		d	A	B	
SCO-BT-4	1/4"	0.18(4.6)	1.92(48.8)	0.96(24.4)	14300(985)
SCO-BT-8	1/2"	0.40(10.2)	2.52(64.0)	1.26(32.0)	11100(764)
SCO-BT-12	3/4"	0.62(15.7)	2.96(75.2)	1.48(37.6)	10900(751)
SCO-BT-16	1"	0.87(22.1)	3.12(79.2)	1.56(39.6)	8800(606)

### Bulkhead Union Body



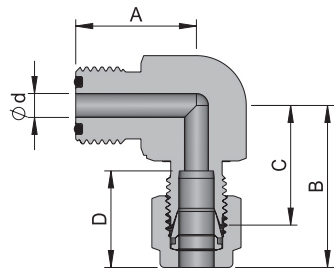
Part Number	SCO Size	Dimensions, inch (mm)						Pressure Rating psig (bar)
		d	A	B	F	Panel Hole Drill Size	Max. Panel Thickness	
SCO-BBU-4	1/4"	0.18(4.6)	1.88(47.8)	1.06(26.9)	3/4(19.05)	37/64(14.68)	0.36(9.1)	14300(985)
SCO-BBU-8	1/2"	0.40(10.2)	2.09(53.1)	1.19(30.2)	1-1/16(26.98)	57/64(22.62)	0.40(10.2)	11100(764)

## S-LOK Tube Fitting Bulkhead Connector Body



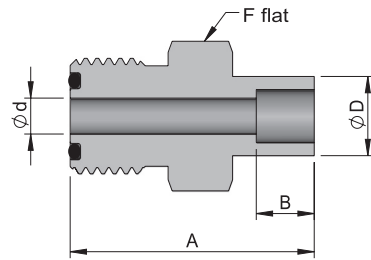
Part Number	SCO Size	Tube O.D.	Dimensions, inch (mm)							Pressure Rating psig (bar)
			d	A	B	C	F	Panel Hole Drill Size	Max. Panel THK.	
SCO-BSCB-4-4T	1/4"	1/4"	0.18(4.6)	2.10(53.3)	0.60(15.2)	1.32(33.5)	5/8(15.87)	29/64(11.50)	0.40(10.2)	10200(702)
SCO-BSCB-8-6T	1/2"	3/8"	0.28(7.1)	2.34(59.4)	0.66(16.8)	1.45(36.8)	15/16(23.81)	37/64(14.68)	0.44(11.2)	6500(447)
SCO-BSCB-8-8T	1/2"	1/2"	0.40(10.2)	2.55(64.8)	0.90(22.9)	1.65(41.9)	15/16(23.81)	49/64(19.44)	0.50(12.7)	6700(461)
SCO-BSCB-12-12T	3/4"	3/4"	0.62(15.7)	2.86(72.6)	0.96(24.4)	1.87(47.5)	1-5/16(33.33)	1-1/64(25.79)	0.66(16.8)	5800(399)
SCO-BSCB-16-16T	1"	1"	0.87(22.1)	3.29(83.6)	1.23(31.2)	2.26(57.4)	1-5/8(41.27)	1-21/64(33.73)	0.75(19.0)	4700(323)

## S-LOK Tube Fitting Elbow Body



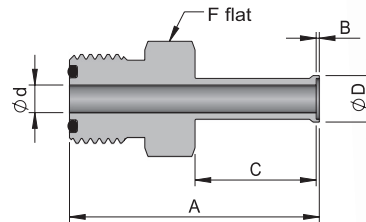
Part Number	SCO Size	Tube O.D.	Dimensions, inch (mm)					Pressure Rating psig (bar)
			d	A	B	C	D	
SCO-BSL-4-4T	1/4"	1/4"	0.18(4.6)	0.96(24.4)	1.19(30.2)	0.90(22.9)	0.60(15.2)	10200(702)
SCO-BSL-8-6T	1/2"	3/8"	0.28(7.1)	1.26(32.0)	1.39(35.3)	1.10(27.9)	0.66(16.8)	6500(447)
SCO-BSL-8-8T	1/2"	1/2"	0.40(10.2)	1.26(32.0)	1.50(38.1)	1.10(27.9)	0.90(22.9)	6700(461)
SCO-BSL-12-12T	3/4"	3/4"	0.62(15.7)	1.48(37.6)	1.80(45.7)	1.40(35.6)	0.96(24.4)	5800(399)
SCO-BSL-16-16T	1"	1"	0.87(22.1)	1.56(39.6)	2.04(51.8)	1.56(39.6)	1.23(31.2)	4700(323)

### Tube Socket Weld Body



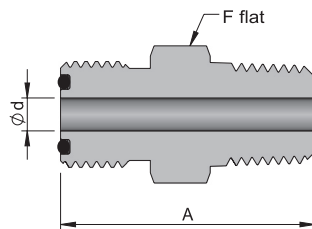
Part Number	SCO Size	Tube O.D	Dimensions, inch (mm)					Pressure Rating psig (bar)
			d	A	B	D	F	
SCO-BSWC-4-2T	1/4"	1/8"	0.09(2.3)	0.88(22.4)	0.10(2.5)	0.29(7.4)	5/8(15.87)	12600(868)
SCO-BSWC-4-4T	1/4"	1/4"	0.18(4.6)	1.09(27.7)	0.28(7.1)	0.38(9.7)	5/8(15.87)	6800(468)
SCO-BSWC-8-6T	1/2"	3/8"	0.28(7.1)	1.28(32.5)	0.31(7.9)	0.60(15.2)	15/16(23.81)	8100(558)
SCO-BSWC-8-8T	1/2"	1/2"	0.40(10.2)	1.34(34.0)	0.38(9.7)	0.73(18.5)	15/16(23.81)	3000(206)
SCO-BSWC-12-12T	3/4"	3/4"	0.62(15.7)	1.50(38.1)	0.44(11.2)	0.92(23.4)	1-5/16(33.33)	3700(254)
SCO-BSWC-16-16T	1"	1"	0.87(22.1)	1.72(43.7)	0.62(15.7)	1.19(30.2)	1-5/8(41.27)	3000(206)

### Automatic Tube Weld Body



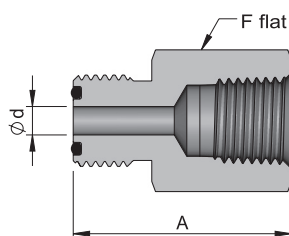
Part Number	SCO Size	Tube O.D	Dimensions, inch (mm)					Pressure Rating psig (bar)	
			d	A	B	C	D		F
SCO-BWAC-4-4T	1/4"	1/4"	0.18(4.6)	1.59(40.4)	0.02(0.51)	0.78(19.8)	0.29(7.4)	5/8(15.87)	5100(351)
SCO-BWAC-8-6T	1/2"	3/8"	0.31(7.9)	1.74(44.2)	0.03(0.76)	0.79(20.0)	0.41(10.4)	15/16(23.81)	3300(227)
SCO-BWAC-8-8T	1/2"	1/2"	0.40(10.2)	1.75(44.4)	0.04(1.0)	0.80(20.3)	0.55(14.0)	15/16(23.81)	3500(241)
SCO-BWAC-12-12T	3/4"	3/4"	0.65(16.5)	1.78(45.2)	0.04(1.0)	0.80(20.3)	0.80(20.3)	1-5/16(33.33)	2200(151)
SCO-BWAC-16-16T	1"	1"	0.87(22.1)	20.3(51.6)	0.04(1.0)	1.00(25.4)	1.06(26.9)	1-5/8(41.27)	2200(151)

### Male Connector Body



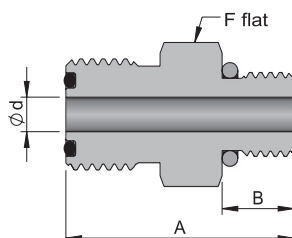
Part Number	SCO Size	NPT Size	Dimensions, inch (mm)			Pressure Rating psig (bar)
			d	A	F	
SCO-BMC-4-2N	1/4"	1/8"	0.18(4.6)	1.16(29.5)	5/8(15.87)	10000(689)
SCO-BMC-4-4N	1/4"	1/4"	0.18(4.6)	1.34(34.0)	5/8(15.87)	13400(923)
SCO-BMC-8-6N	1/2"	3/8"	0.38(9.7)	1.46(37.1)	15/16(23.81)	7800(537)
SCO-BMC-8-8N	1/2"	1/2"	0.40(10.2)	1.65(41.9)	15/16(23.81)	10000(689)
SCO-BMC-12-12N	3/4"	3/4"	0.62(15.7)	1.75(44.4)	1-5/16(33.33)	7300(502)
SCO-BMC-16-16N	1"	1"	0.87(22.1)	1.97(50.0)	1-5/8(41.27)	5300(365)

## Female Connector Body



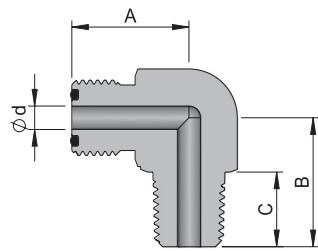
Part Number	SCO Size	NPT Size	Dimensions, inch (mm)			Pressure Rating psig (bar)
			d	A	F	
SCO-BFC-4-2N	1/4"	1/8"	0.18(4.6)	1.25(31.8)	5/8(15.87)	8400(578)
SCO-BFC-4-4N	1/4"	1/4"	0.18(4.6)	1.39(35.3)	3/4(19.05)	6600(454)
SCO-BFC-8-6N	1/2"	3/8"	0.40(10.2)	1.57(39.9)	15/16(23.81)	6600(454)
SCO-BFC-8-8N	1/2"	1/2"	0.40(10.2)	1.77(45.0)	1-1/16(26.98)	4900(337)
SCO-BFC-12-12N	3/4"	3/4"	0.62(15.7)	1.93(49.0)	1-5/16(33.33)	4600(316)
SCO-BFC-16-16N	1"	1"	0.87(22.1)	2.02(51.3)	1-5/8(41.27)	4400(303)

## Male SAE/MS Connector Body



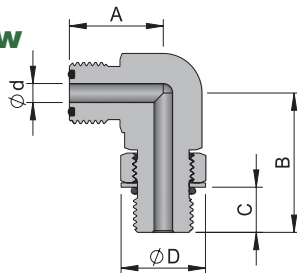
Part Number	SCO Size	Straight Thread Size	Dimensions, inch (mm)				Pressure Rating psig (bar)
			d	A	B	F	
SCO-BUS-4-4U	1/4"	7/16 – 20	0.18(4.6)	1.24(31.5)	0.36(9.1)	11/16(17.46)	4500(310)
SCO-BUS-4-6U	1/4"	9/16 – 18	0.18(4.6)	1.17(29.7)	0.39(9.9)	11/16(17.46)	4500(310)
SCO-BUS-8-4U	1/2"	7/16 – 20	0.18(4.6)	1.36(34.5)	0.36(9.1)	15/16(23.81)	4500(310)
SCO-BUS-8-6U	1/2"	9/16 – 18	0.30(7.6)	1.39(35.3)	0.39(9.9)	15/16(23.81)	4500(310)
SCO-BUS-8-8U	1/2"	3/4 – 16	0.40(10.2)	1.47(37.3)	0.44(11.2)	1(25.40)	4500(310)
SCO-BUS-12-12U	3/4"	1-1/16 – 12	0.62(15.7)	1.73(43.9)	0.59(15.0)	1-3/8(34.92)	3600(248)
SCO-BUS-16-16U	1"	1-5/16 – 12	0.85(21.6)	1.79(45.5)	0.59(15.0)	1-5/8(41.27)	2900(199)

### Male Elbow Body



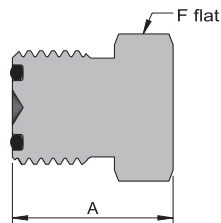
Part Number	SCO Size	NPT Size	Dimensions, inch (mm)				Pressure Rating psig (bar)
			d	A	B	C	
SCO-BLM-4-2N	1/4"	1/8"	0.18(4.6)	0.96(24.4)	0.87(22.1)	0.38(9.7)	10000(689)
SCO-BLM-4-4N	1/4"	1/4"	0.18(4.6)	0.96(24.4)	1.05(26.7)	0.56(14.2)	8000(551)
SCO-BLM-8-6N	1/2"	3/8"	0.38(9.7)	1.26(32.0)	1.26(32.0)	0.56(14.2)	7800(537)
SCO-BLM-8-8N	1/2"	1/2"	0.40(10.2)	1.26(32.0)	1.45(36.8)	0.75(19.0)	7700(530)
SCO-BLM-12-12N	3/4"	3/4"	0.62(15.7)	1.48(37.6)	1.67(42.4)	0.75(19.0)	7300(502)
SCO-BLM-16-16N	1"	1"	0.87(22.1)	1.56(39.6)	1.94(49.3)	0.94(23.9)	5300(365)

### Male SAE/MS Positionable Elbow Body



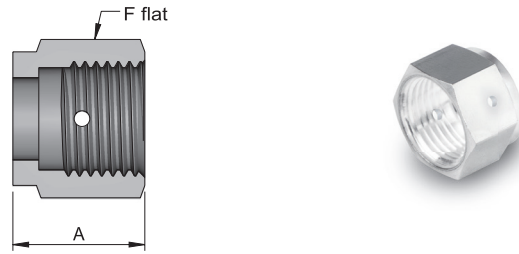
Part Number	SCO Size	Straight Thread Size	Dimensions, inch (mm)					Pressure Rating psig (bar)
			d	A	B	C	D	
SCO-BLS-4-4U	1/4"	7/16 – 20	0.18(4.6)	0.96(24.4)	1.19(30.2)	0.39(9.9)	0.65(16.5)	4500(310)
SCO-BLS-8-6U	1/2"	9/16 – 18	0.30(7.6)	1.33(33.8)	1.54(39.1)	0.44(11.2)	0.79(20.1)	3600(248)
SCO-BLS-8-8U	1/2"	3/4 – 16	0.40(10.2)	1.33(33.8)	1.65(41.9)	0.50(12.7)	1.01(25.7)	3600(248)
SCO-BLS-12-12U	3/4"	1-1/16 – 12	0.62(15.7)	1.53(38.9)	2.13(54.1)	0.66(16.8)	1.44(36.6)	2900(199)
SCO-BLS-16-16U	1"	1-5/16 – 12	0.87(22.1)	1.72(43.7)	2.31(58.7)	0.66(16.8)	1.73(43.9)	2300(158)

### Blind



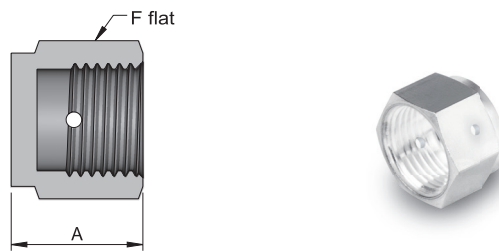
Part Number	SCO Size	Dimensions, inch (mm)	
		A	F
SCO-CAP-4	1/4"	0.77(19.6)	5/8(15.87)
SCO-CAP-8	1/2"	0.89(22.6)	15/16(23.81)
SCO-CAP-12	3/4"	0.99(25.1)	1-5/16(33.33)
SCO-CAP-16	1"	1.02(25.9)	1-5/8(41.27)

## Female Nut



Part Number	SCO Size	Dimensions, inch (mm)	
		A	F
SCO-NUT-4	1/4"	0.66(16.8)	11/16(17.46)
SCO-NUT-8	1/2"	0.69(17.5)	1(25.40)
SCO-NUT-12	3/4"	0.81(20.6)	1-1/2(38.10)
SCO-NUT-16	1"	0.81(20.6)	1-3/4(44.45)

## Blind Nut

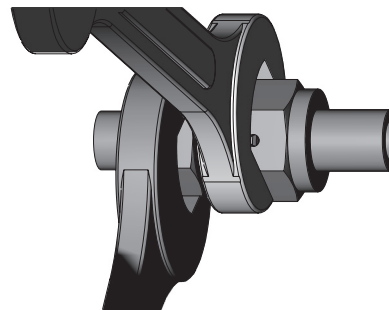
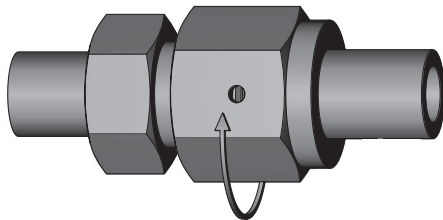


Part Number	SCO Size	Dimensions, inch (mm)	
		A	F
SCO-BLNUT-4	1/4"	0.44(11.2)	11/16(17.46)
SCO-BLNUT-8	1/2"	0.56(14.2)	1(25.40)
SCO-BLNUT-12	3/4"	0.75(19.0)	1-1/2(38.10)
SCO-BLNUT-16	1"	0.81(20.6)	1-3/4(44.45)

## ↗ SCO Fitting Installation Instruction

1. Rotate the nut finger-tight.

2. Tighten the nut 1/8 turn with spanner.



## NOTE

O-ring should be removed to prevent thermal damage when welding of bodies or glands.